

**Southeast, 19 - 22 Sep 2009**  
**Annual Exceedance Probabilities (AEPs) for the Highest 24-hour Rainfall Period**

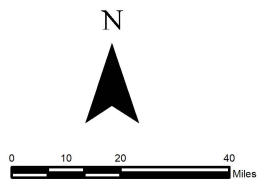
**Hydrometeorological Design Studies Center**  
**Office of Water Prediction, National Weather Service**  
**National Oceanic and Atmospheric Administration**

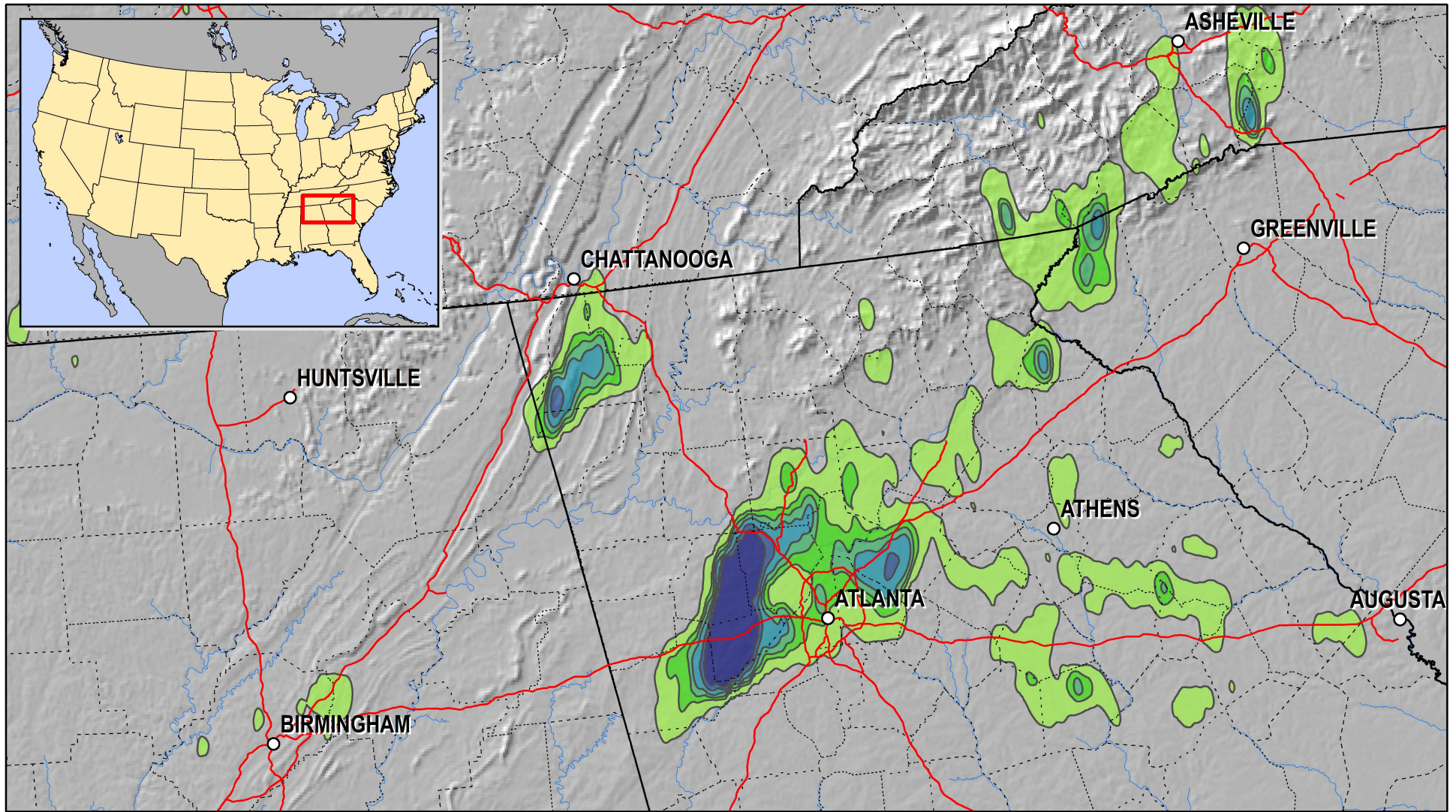
<https://www.nws.noaa.gov/ohd/hdsc/>

Created 11 June 2019

Precipitation frequency estimates are from NOAA Atlas 14  
 Rainfall values come from 1-hour Stage IV multi-sensor data.

- > 1/10
- 1/50 - 1/10
- 1/100 - 1/50
- 1/200 - 1/100
- 1/500 - 1/200
- 1/1000 - 1/500
- < 1/1000





**Southeast, 18 - 23 Sep 2009**  
**Annual Exceedance Probabilities (AEPs) for the Highest 4-day Rainfall Period**

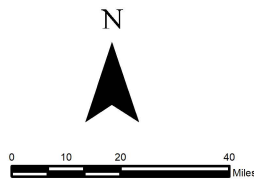
**Hydrometeorological Design Studies Center**  
**Office of Water Prediction, National Weather Service**  
**National Oceanic and Atmospheric Administration**

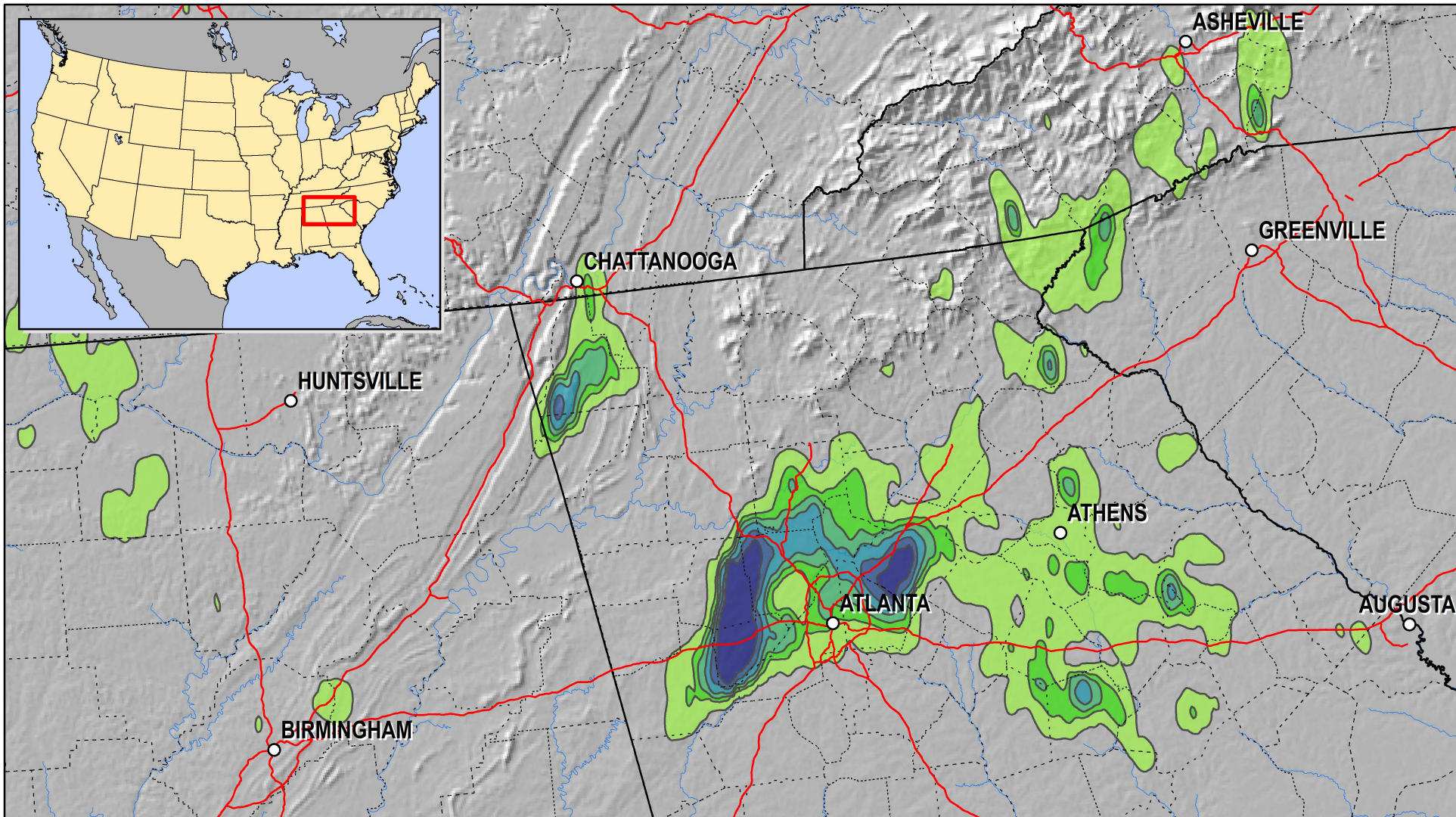
<https://www.nws.noaa.gov/ohd/hdsc/>

Created 11 June 2019

Precipitation frequency estimates are from NOAA Atlas 14  
 Rainfall values come from 1-hour Stage IV multi-sensor data.

- > 1/10
- 1/50 - 1/10
- 1/100 - 1/50
- 1/200 - 1/100
- 1/500 - 1/200
- 1/1000 - 1/500
- < 1/1000





**Southeast, 16 - 24 Sep 2009**  
**Annual Exceedance Probabilities (AEPs) for the Highest 7-day Rainfall Period**

**Hydrometeorological Design Studies Center**  
**Office of Water Prediction, National Weather Service**  
**National Oceanic and Atmospheric Administration**

<https://www.nws.noaa.gov/ohd/hdsc/>

Created 11 June 2019

Precipitation frequency estimates are from NOAA Atlas 14  
 Rainfall values come from 1-hour Stage IV multi-sensor data.

- > 1/10
- 1/50 - 1/10
- 1/100 - 1/50
- 1/200 - 1/100
- 1/500 - 1/200
- 1/1000 - 1/500
- < 1/1000

